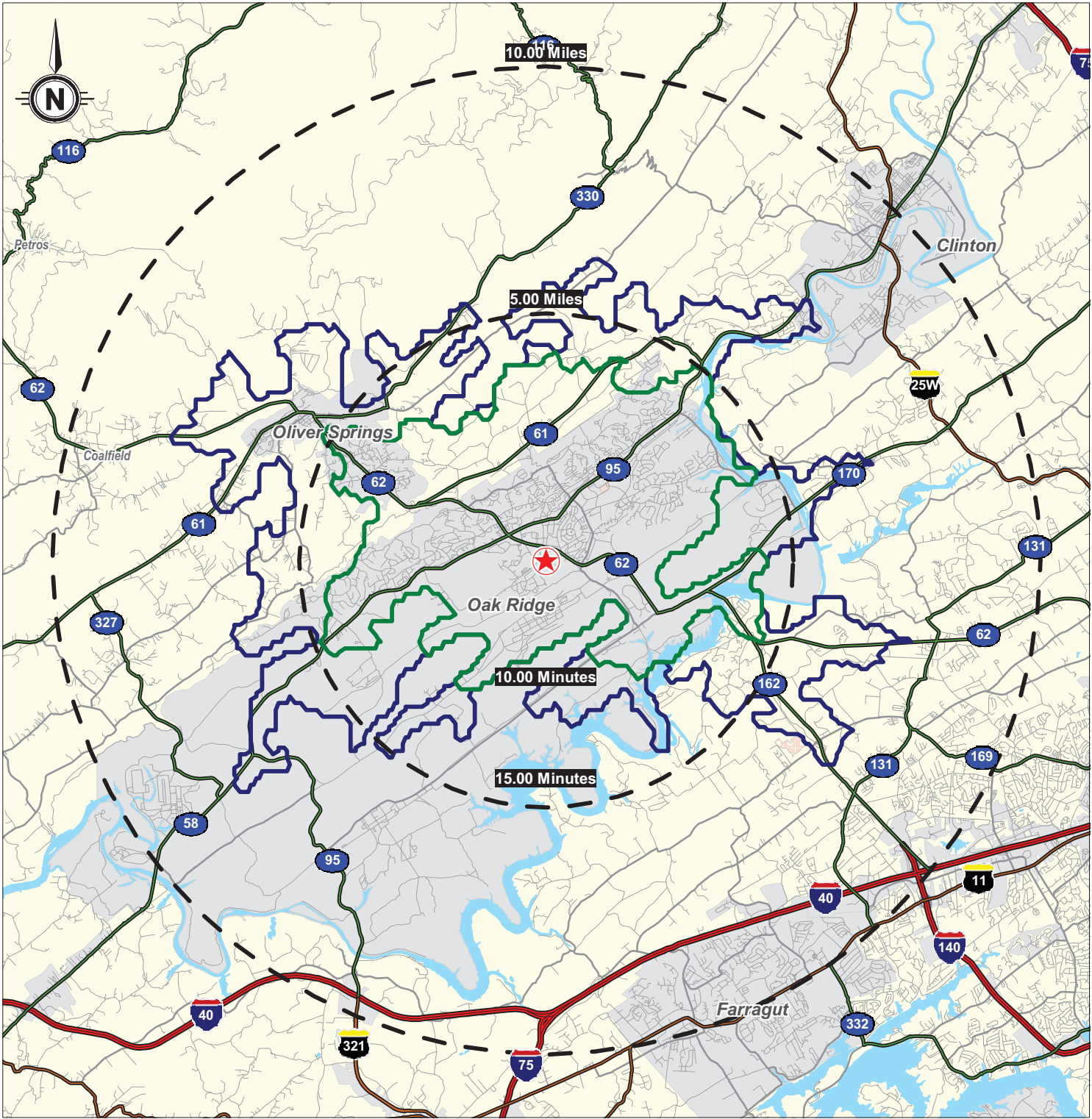


Lat: 36.0028 Lon: -84.2561 Zoom: 2.858 mi Logos are for identification purposes only and may be trademarks of their respective companies.



©2010, The Shopping Center Group, Nashville, TN (615) 259-0200. All Rights Reserved.

Wilberforce Avenue at Woodbury Lane Oak Ridge, Tennessee

Owner:
 Bob Monday
 Monday Properties
 902 Kermit Drive
 Knoxville, TN 37912
 Phone: (865) 219-9000
 Fax: (865) 219-9005

Parcels
 001105D A 02400
 001105D A 02300

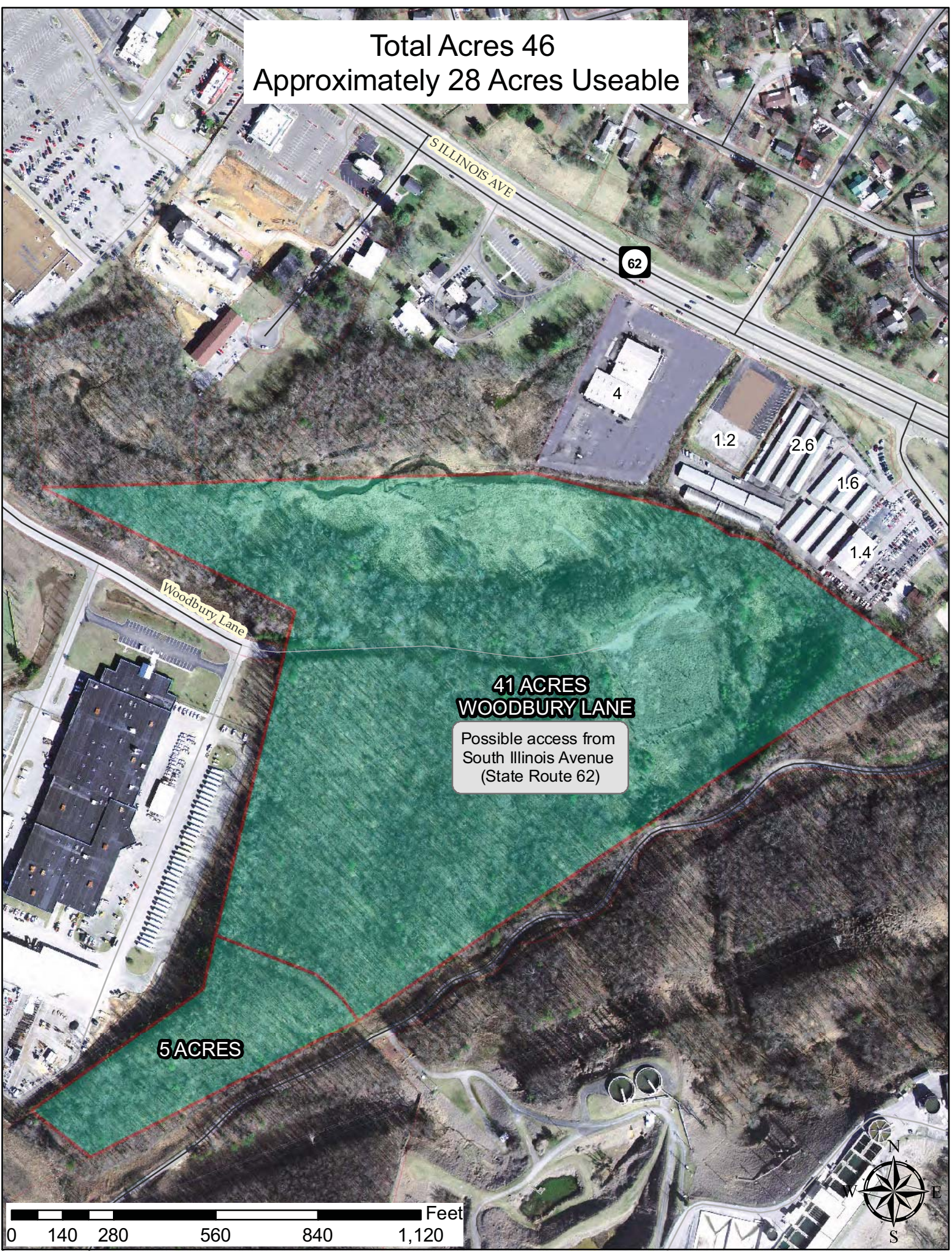
Prepared For



For More Information: Parker Hardy, President/CEO | Oak Ridge Chamber of Commerce
 1400 Oak Ridge Turnpike, Oak Ridge, TN 37830 | (865) 483-1321 | hardy@orcc.org | www.orcc.org

This map was produced using data from private and government sources deemed to be reliable. The information herein is provided without representation or warranty.

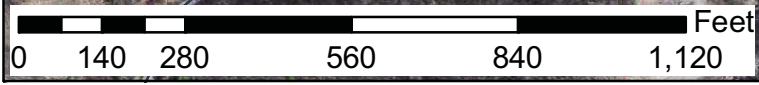
Total Acres 46
Approximately 28 Acres Useable



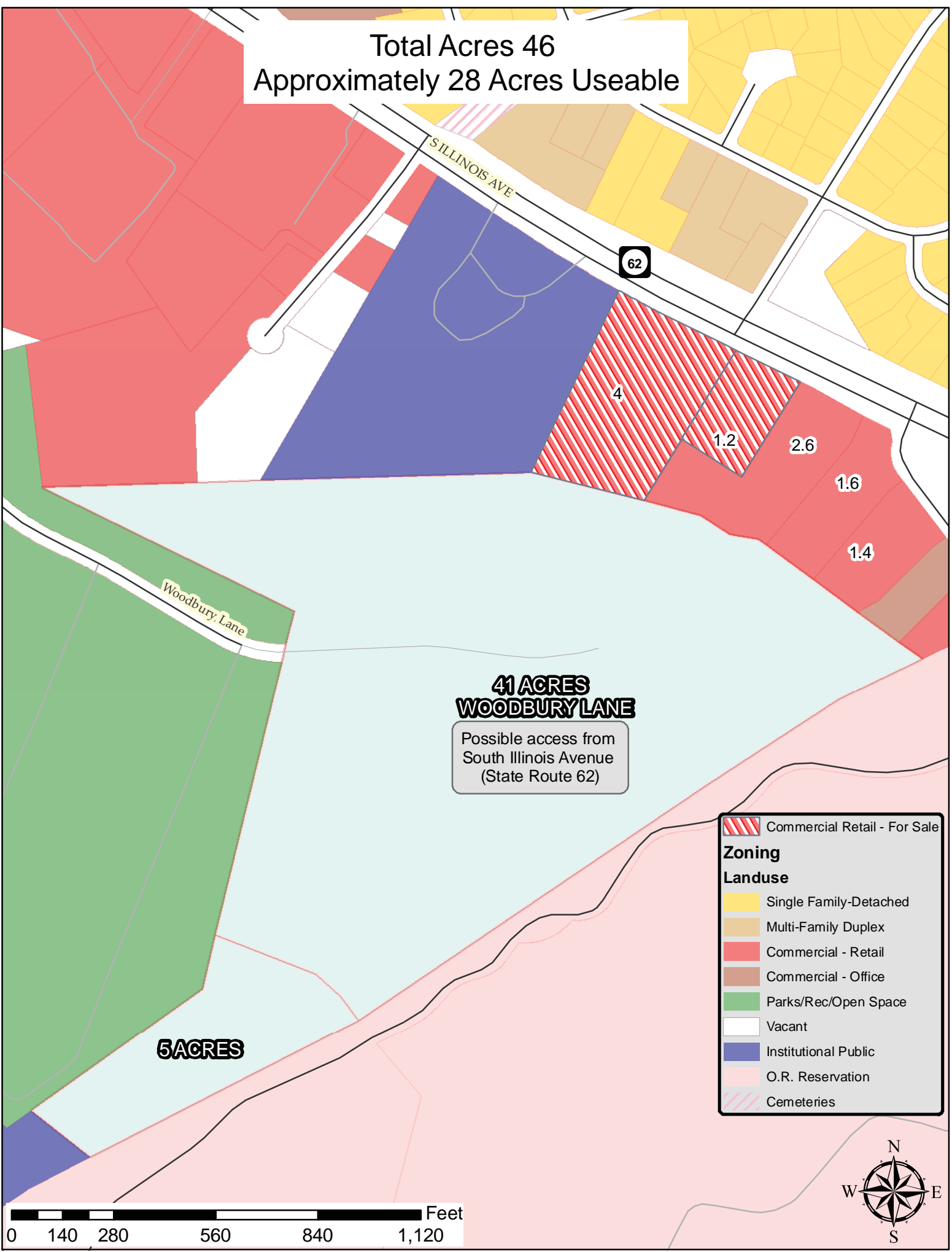
**41 ACRES
WOODBURY LANE**

Possible access from
South Illinois Avenue
(State Route 62)

5 ACRES



Total Acres 46
Approximately 28 Acres Useable

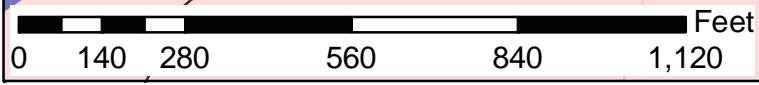


Commercial Retail - For Sale

Zoning

Landuse

- Single Family-Detached
- Multi-Family Duplex
- Commercial - Retail
- Commercial - Office
- Parks/Rec/Open Space
- Vacant
- Institutional Public
- O.R. Reservation
- Cemeteries



SUMMARY DEMOGRAPHIC PROFILE

1990 - 2000 Census, 2010 Estimates & 2015 Projections - as of 1st Qtr / 10

Calculated using Proportional Blocks



Lat/Lon: 36.00282/-84.25606

2010

Wilberforce Avenue at Woodbury Lane Oak Ridge, Tennessee		5.00 mi radius	10.00 mi radius	10.00 min drivetime	15.00 min drivetime
POPULATION	2010 Estimated Population	35,738	112,507	30,289	41,929
	2015 Projected Population	36,737	118,975	30,950	43,273
	2000 Census Population	33,675	97,708	28,904	38,794
	1990 Census Population	32,871	85,148	28,728	37,372
	Historical Annual Growth 1990 to 2010	0.4%	1.6%	0.3%	0.6%
	Projected Annual Growth 2010 to 2015	0.6%	1.1%	0.4%	0.6%
	2010 Male Population	47.4%	48.4%	47.2%	47.6%
	2010 Female Population	52.6%	51.6%	52.8%	52.4%
	2010 Average Age	42.3	40.8	42.3	42.0
	2010 Median Age	39.2	37.9	39.0	38.7
HOUSEHOLDS	2010 Estimated Households	15,561	45,323	13,418	18,040
	2015 Projected Households	15,996	47,869	13,717	18,606
	2000 Census Households	14,571	39,444	12,709	16,621
	1990 Census Households	13,999	33,255	12,437	15,739
	Historical Annual Growth 1990 to 2010	0.6%	1.8%	0.4%	0.7%
Projected Annual Growth 2010 to 2015	0.6%	1.1%	0.4%	0.6%	
POPULATION BY RACE	2010 Estimated White	88.1%	92.3%	87.0%	89.0%
	2010 Estimated Black or African American	7.4%	4.2%	8.2%	6.7%
	2010 Estimated Asian	2.4%	1.9%	2.6%	2.2%
	2010 Estimated Other Races	2.2%	1.6%	2.3%	2.1%
	2010 Estimated Hispanic	2.8%	2.3%	3.0%	2.6%
INCOME	2010 Estimated Average Household Income	\$ 63,406	\$ 71,382	\$ 62,074	\$ 63,525
	2010 Estimated Median Household Income	\$ 53,089	\$ 59,906	\$ 51,668	\$ 53,050
	2010 Estimated Per Capita Income	\$ 27,693	\$ 28,714	\$ 27,479	\$ 27,427
EDUCATION (AGE 25+)	2010 Elementary	5.4%	5.6%	5.3%	6.0%
	2010 Some High School	8.4%	8.7%	8.3%	8.8%
	2010 High School Graduate	26.7%	27.2%	26.2%	27.8%
	2010 Some College	20.7%	20.6%	21.1%	20.4%
	2010 College Degree	38.8%	37.9%	39.1%	36.9%
BUSINESS	Number of Businesses	1,065	2,793	987	1,191
	Total Number of Employees	27,109	58,106	25,656	28,904
	Avg Employee Population per Business	25.5	20.8	26.0	24.3
	Avg Residential Population per Business	33.6	40.3	30.7	35.2

This report was produced using data from private and government sources deemed to be reliable. The information herein is provided without representation or warranty.